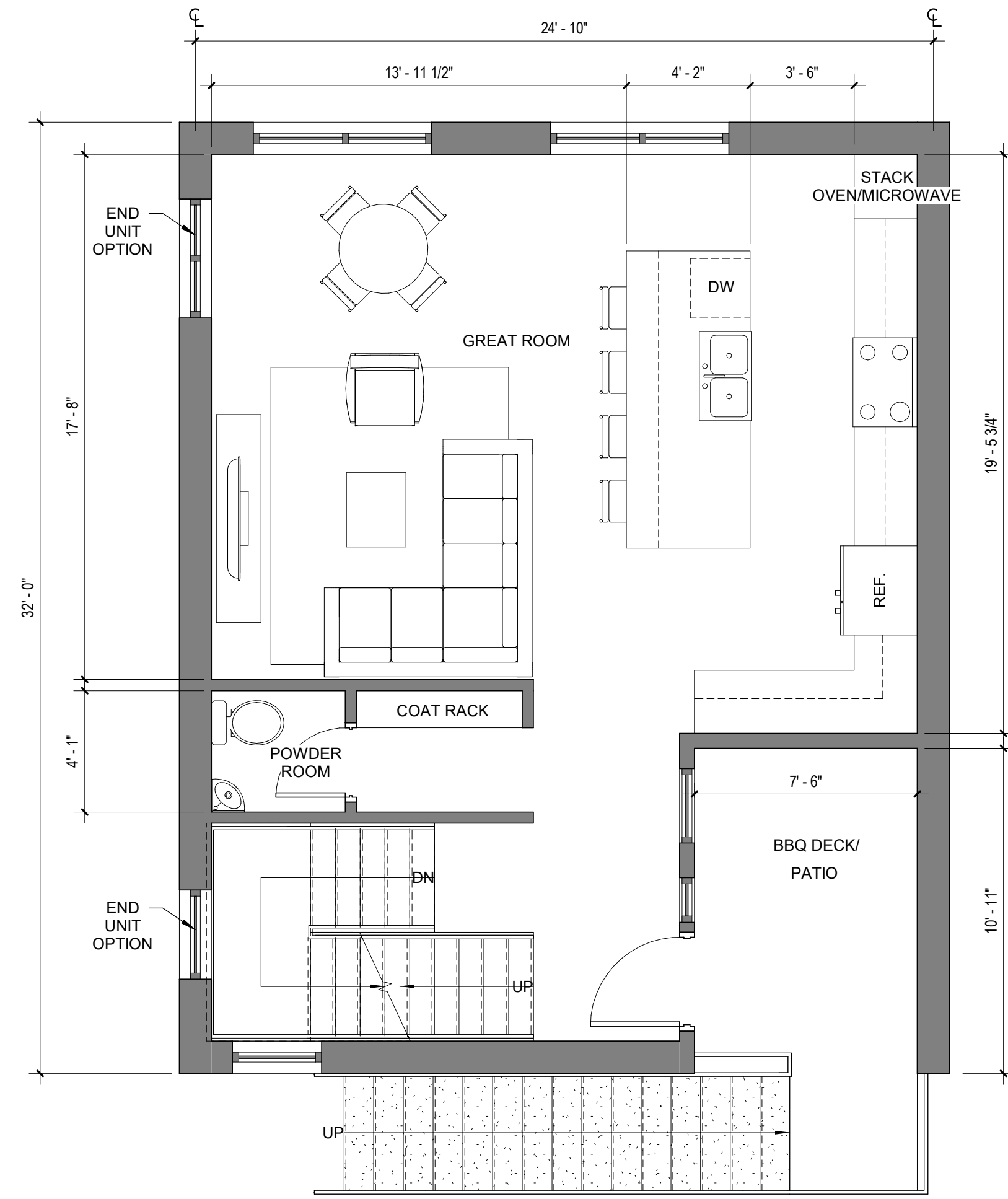
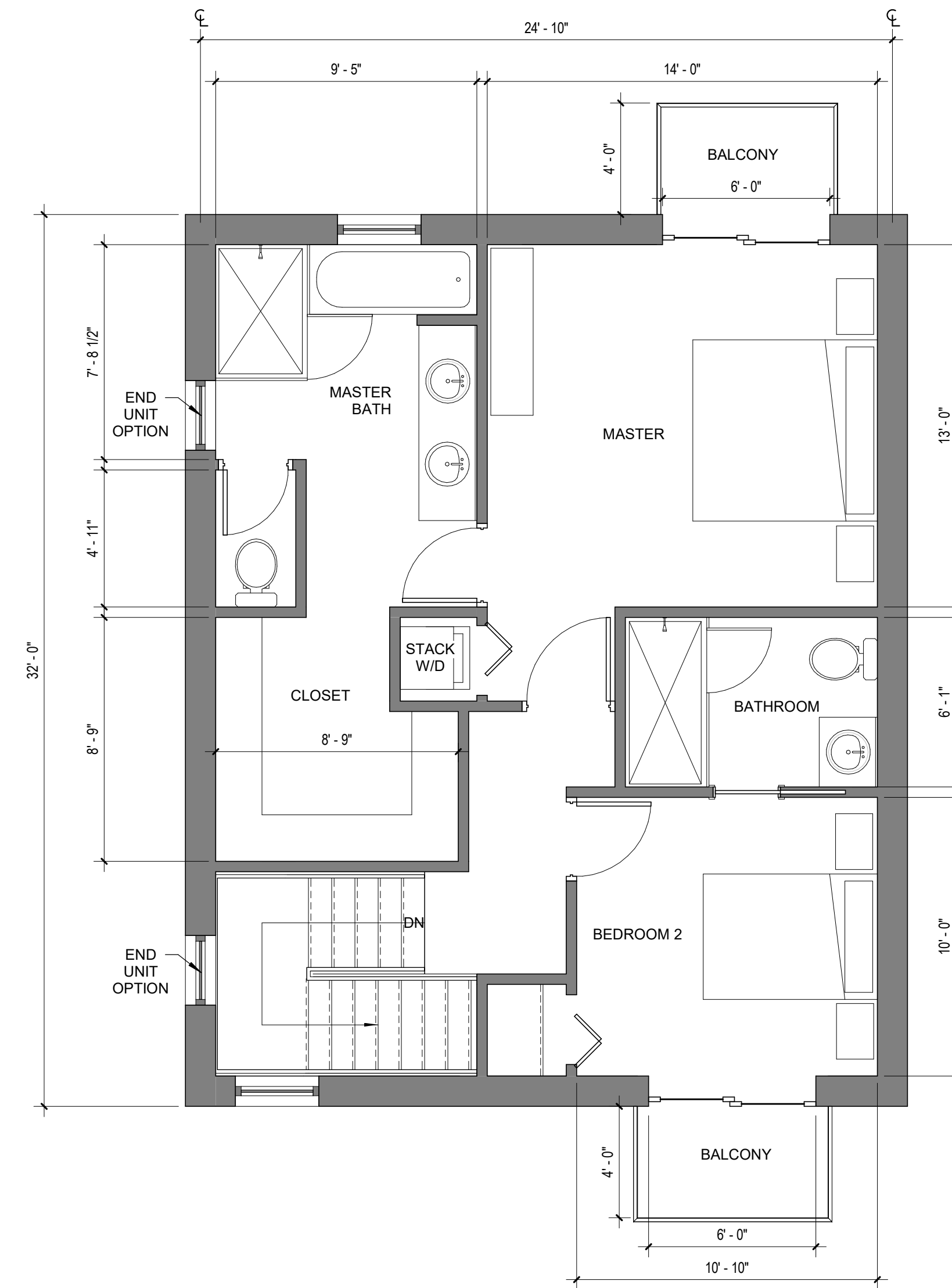


1 N ADAMS ST - GARAGE
2.1 1/4" = 1'-0"



2 N ADAMS ST - LEVEL 1
2.1 1/4" = 1'-0"



3 N ADAMS ST - LEVEL 2
2.1 1/4" = 1'-0"

Drawing Set Status

HUMMEL
a: 2785 North Bogus Basin Road
Boise, Idaho 83702
p: 208/343.7523
f: 208/343.0940

Project:
WATERFRONT

Project Street
City, ST XXXXX

Sheet:
N ADAMS ST

Revisions:

Project No:	18XXX
Drawn By:	Author
Checked By:	Checker
Date:	XX / XX / XXXX

Sheet No:
2.1